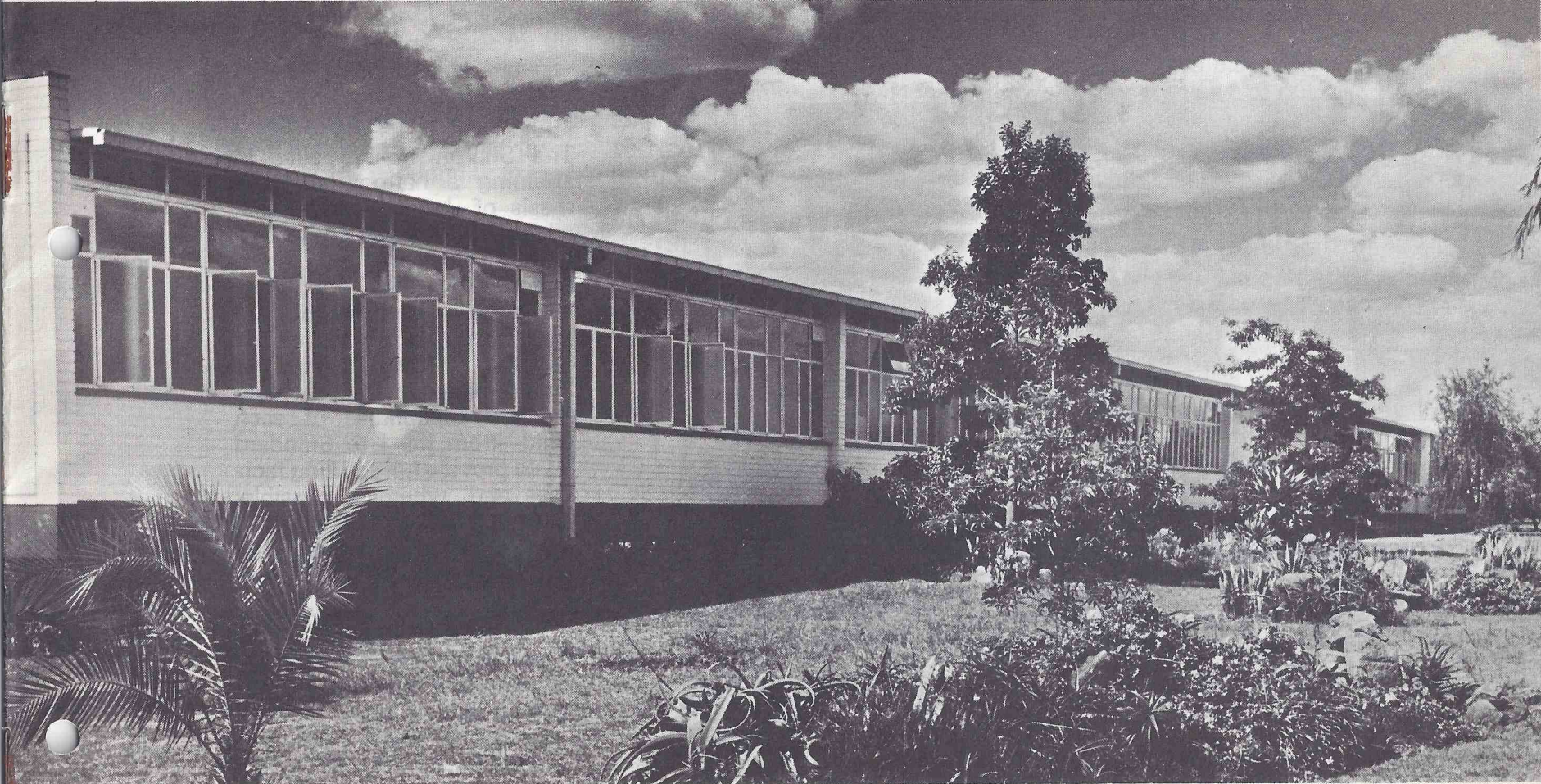


MESSAGE FROM THE PRESIDENT, CENTRAL OFFICE, MINISTERS SECRETARIAT,
THE HON. MINISTER OF EDUCATION, GOVERNMENT OF SINGAPORE



(PHOTO HELMUT LEVY)

sharon school



Visit of the Prime Minister The Honourable Ian Douglas Smith

(PHOTO RHODESIA HERALD)

INTRODUCTION

The Sharon School aims at attaining a harmonious synthesis of Jewish and secular education, in the conviction that the informed and committed Jew, with a spiritual and religious understanding of his heritage, is a better citizen and a better human being. The School endeavours to develop the full capabilities of each child—from KG I to Standard V—to provide full sporting facilities and, wherever possible, extra-curricular activities above the minimum required by the Government Education Department.

MESSAGE FROM THE PRESIDENT, CENTRAL AFRICA ZIONIST ORGANISATION

THE IMPORTANCE of Jewish Day Schools and the vital part they play in Jewish life has long been appreciated by the Zionist Movement and it was indeed, at a Rhodesian Zionist Conference, that plans were first made for the establishment of such schools for our local communities.

It is with no little pride and satisfaction, that we can now review the role that they have played in instilling in the younger members of our community a knowledge and love of Judaism and of our Jewish heritage and language, together with an interest in and identification with Israel.

It is our sincere hope that the schools will continue to derive the fullest possible support from all sectors of the community to enable them to continue with this, their worthwhile and important task.

M. LASOVSKY.



MESSAGE FROM THE PRESIDENT, RHODESIAN JEWISH BOARD OF DEPUTIES

WHEN, in January 1958, the Board of Deputies launched Carmel School in Bulawayo, and two years later, Sharon School in Salisbury, there was no guarantee that these schools would, within a few years, come to occupy the important place in the Rhodesian Jewish community that they do today. From small beginnings both have developed into full-scale schools catering for Jewish children from KG I to Standard V, with a proud record of achievement in the Jewish and general curricula.

It is universally recognised that Jewish education is fundamental to the survival of Jewish communities and to the preservation of their heritage, and that the best, indeed, the most natural environment for imparting that education is the Jewish Day School.

I would urge the Jewish community of Salisbury to give Sharon School every support in the years ahead, so that it may fulfil its aim of giving an ever-widening circle of Jewish children the benefits of a well integrated secular and Jewish education.

A. E. ABRAHAMSON.

MESSAGE FROM THE PRESIDENT, CENTRAL AFRICA ZIONIST ORGANISATION
THE IMPORTANCE of Jewish Day Schools and the vital part they play in Jewish life has long
been appreciated by the Zionist Movement and it was indeed at a Zionist Zionist Conference
that plans were made for the establishment of such schools for our local communities.
It is with an air of pride and satisfaction that we now review the role that they have played in



Shabat Ceremony

GOVERNING BODY

The ultimate responsibility for all matters affecting the progress and welfare of the School is vested in a fully constituted and independent Board of Governors, together with its Trustees.

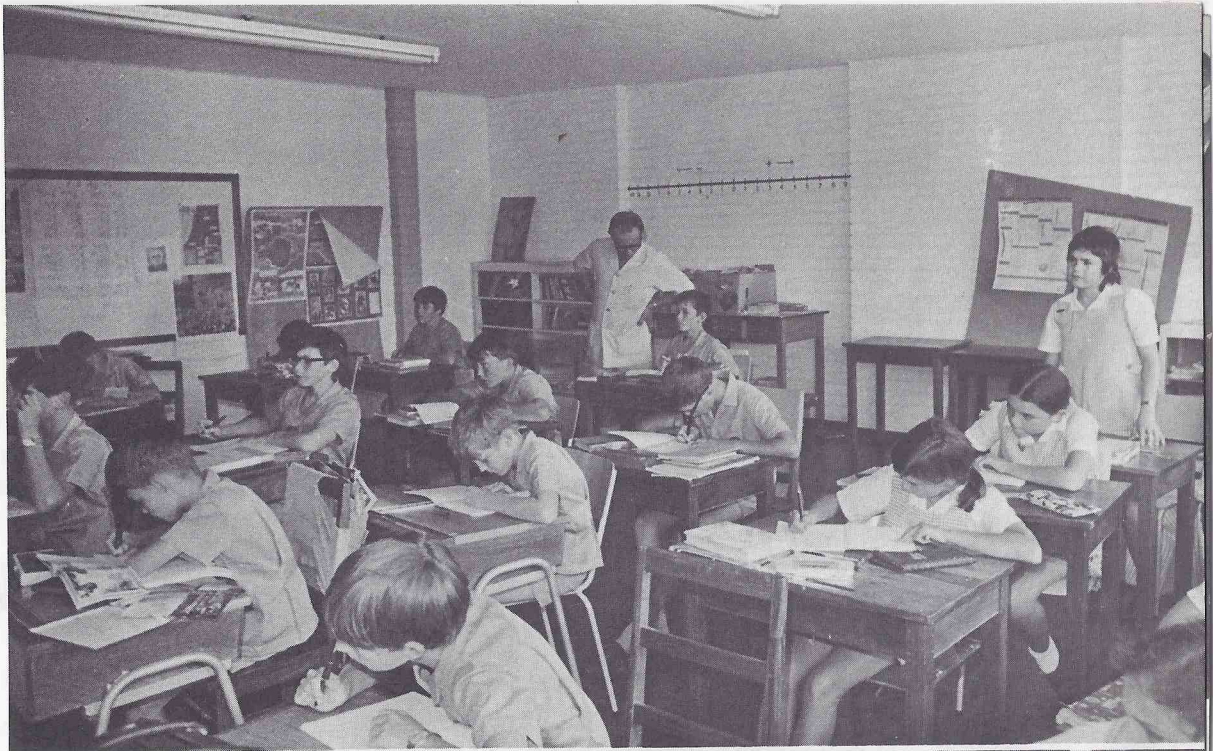
This body includes members appointed by the C.A. Jewish Board of Deputies and the C.A. Zionist Organisation together with members elected by Parents and Donors. In addition, each of the three Hebrew congregations of Salisbury has a member serving on the Board. A Governor is elected or appointed for a period of two years, but may continue to serve for further terms if re-elected.

*Class in
Progress*

STAFF

At present, the Staff consists of the Principal, with a staff of seven secular teachers, the Head of the Hebrew Department and two Hebrew teachers. Teachers supervise sporting and extra-curricular activities, in addition to their normal teaching duties.

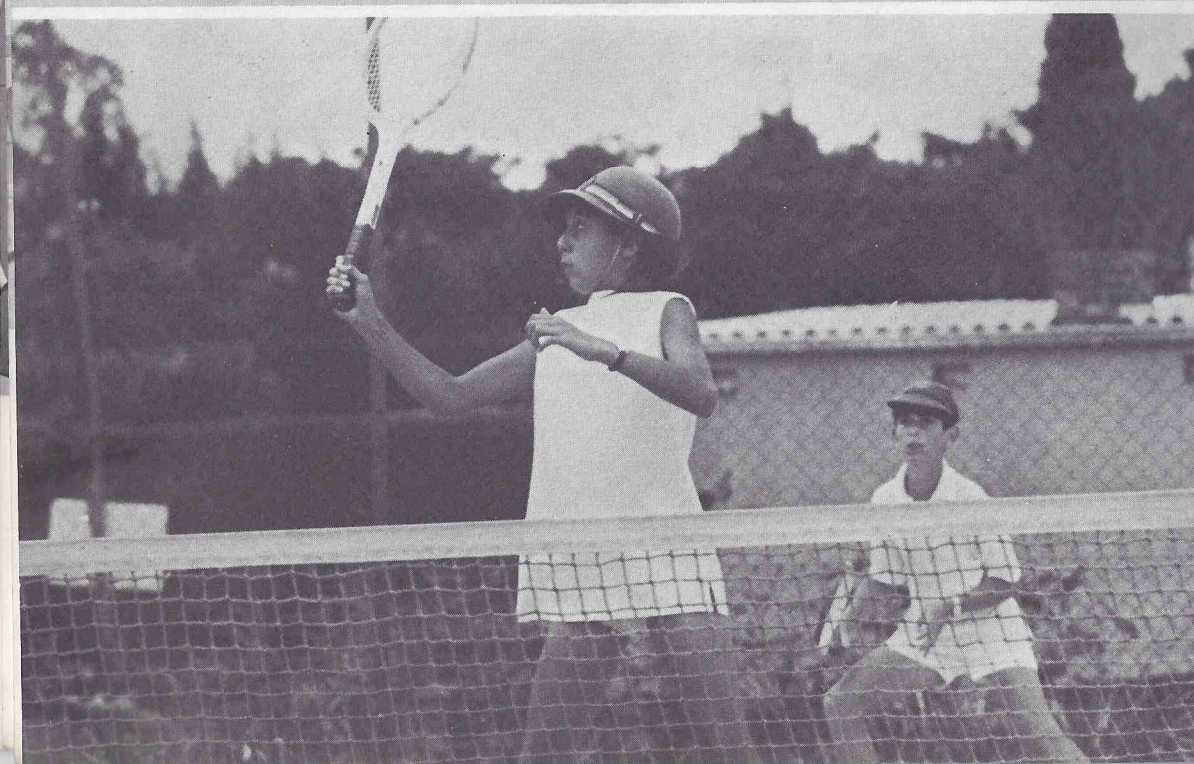
A full-time Secretary and a Caretaker / Groundsman are also employed by the School as well as a cleaning and service labour force.



Art Session



"Boundary"



"Volley"

ADMISSION

Normally, children are admitted to KG I in the year in which they attain their sixth birthday. Hebrew and Judaism is part of the curriculum of the School. Owing to its congregational affiliations, priority is given to children of the Jewish faith, and then to those non-Jewish children who have brothers and sisters at the School.

Entrance to higher classes depends on there being a vacancy and on the pupil having attained the required standard in Hebrew.

CURRICULUM

Studies: The programme of studies follows the normal Rhodesian Education Department syllabus in all secular subjects, from KG I to Standard V level. Modern teaching methods are a special feature of the school. The staff are constantly exploring the latest proven teaching innovations.

Hebrew: The School maintains a Jewish National traditional outlook. Hebrew is taught as a living language, and the curriculum provides for religious instruction in accordance with the laws and customs of the orthodox Jewish faith, including history and Bible studies.

Sports: Most seasonal sports form an active part of afternoon activities. Soccer, tennis, swimming, cricket, rounders, athletics all have specialised coaches.

Health: The School is fortunate in having several doctors on its various committees and these, and others, are always available.

Extra-curricular Activities: The School has a strong Chess Club and Choir. Musical appreciation is covered and other societies meet during their appropriate seasons.

School Functions: All festivals are fully observed and their significance highlighted by special, organised functions wherever possible. In addition, there are annual athletic meetings, swimming galas, inter-school competitions, open days and prize-givings, etc.



Batmitzvah Graduation Class 1969

ENROLMENT

Admission lists are compiled in accordance with date of application. Final enrolment is confirmed by not later than the term prior to commencement of school.

The School aims at limiting classes to an optimum of 26. The final decision for admission rests with the Board of Governors, in consultation with the Principal.

FINANCE

THE BUDGET of the School is made up from fees, grants and subsidies, as well as a steady flow of voluntary contributions from parents and members of the public as well as from communal bodies. To date, financial subsidies continue to be made by the C.A. Jewish Board of Deputies and the C.A. Zionist Organisation. In addition the School receives an annual Government Grant, based on the number of children attending.

SHARON HEBREW EDUCATION AND FOUNDATION FUND

IN FOLLOWING a policy of catering for the education of children of the Jewish faith, the Sharon School offers members of each of the Jewish congregations a rebate of 50% on school fees. The normal income is therefore insufficient in itself to cover the annual budget without subsidies, and the generous support of the community. In 1969 the Sharon Hebrew Education and Foundation Fund was launched and has afforded an opportunity to parents to contribute, within their capacity, to a fund which ensures the progress and maintenance of the high standards of the School.

Patrons of the School are also donating substantially, as a positive expression of their support and acknowledgement of the important contribution that the School is making to the welfare of the Jewish community.

The Fund has ensured that no Jewish child of primary school age is prevented from attending the School because of any financial limitations of the parents. In addition, it acts as an insurance in providing facilities and equipment to meet the constant advances being made in teaching methods, etc.

SCHOOL FEES

The scale of fees may be found in the enclosed folder.

SCHOOL UNIFORM

This is determined by the P.T.A. and the stockist is Jacob S. Benatar (Pvt.) Ltd., of Moffat Street, Salisbury.

The badge of the School consists of a gold Magen David on blue background, with the School motto: "Let there be Light," written in Hebrew above and English below, symbolising the spirit of learning and understanding.

The School colours are blue, white and gold.

P.T.A.

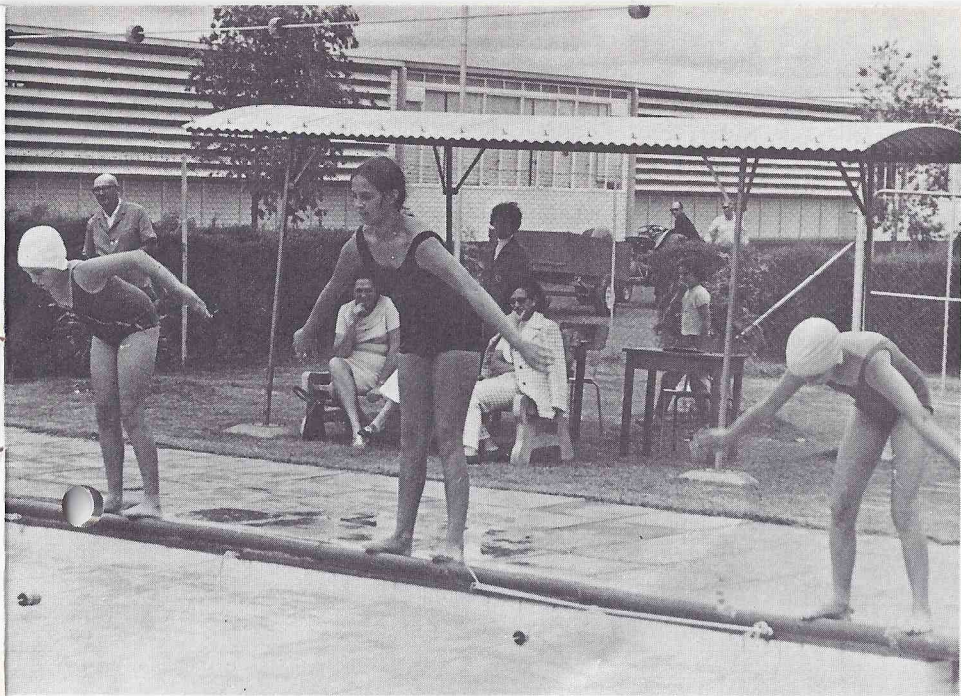
The School has a P.T.A. which serves as a liaison between parents and teachers. The Association actively engages in projects to provide the School with additional amenities in the secular and religious as well as sporting departments. The members also assist at School functions, where parents can witness, or participate in, the activities of their children.

SITE AND BUILDINGS

The School occupies modern, airy premises in pleasant surroundings on the site of the Jewish Communal Centre in Lezard Avenue. These have been made available by the Salisbury Hebrew Congregation at a nominal annual rental.

The site includes good sporting and playground facilities as well as Tennis Courts and a swimming bath. There is sufficient space for future extensions. The classrooms are spacious with adequate lighting and ventilation. Separate wings are allocated for KG's and Standard classes and use of Congregational premises is available for special occasions. The grounds continue to be developed, to provide more trees and shade and a general beautification of the surrounds.

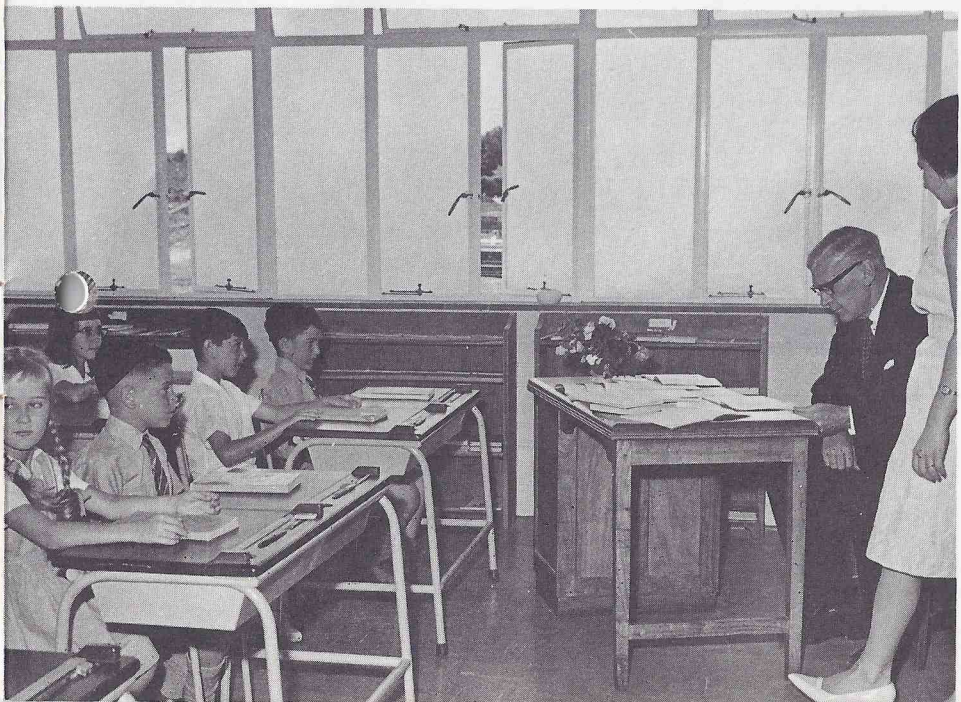
Areas adjoining the School have been reserved by the Congregation for future development of education and cultural needs, as well as for a Synagogue.



Swimming Gala



J.N.F. Quiz – Shield Comes to Sharon



Visit by Sir Humphrey Gibbs



At Play Time